

BIOPREN® 5 EC



LARVICIDE CONCENTRATE

based on
S-methoprene
insect growth regulator

95 % OF THE FLEA POPULATION IS HIDDEN



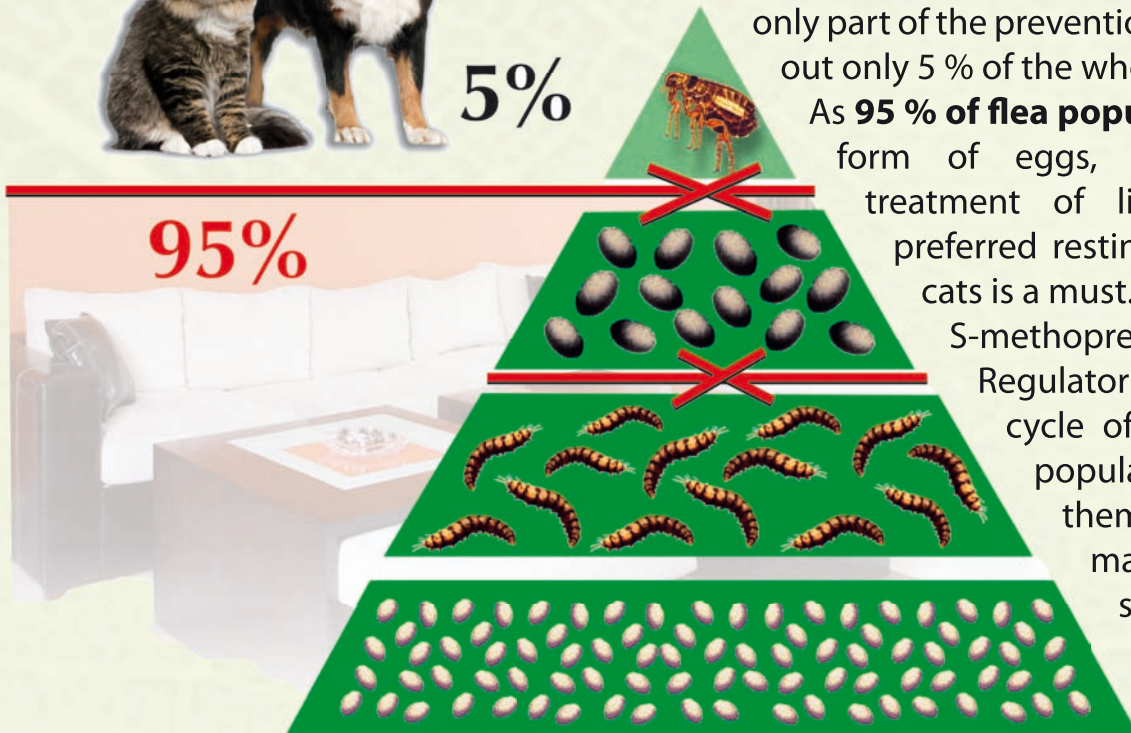
5%

Most of the fleas are living in
your pet's environment, rather than in its fur.

For efficient flea control, on-animal treatment is only part of the prevention, as adult fleas make out only 5 % of the whole flea population.

As **95 % of flea population is hidden** in a form of eggs, larvae and pupae, treatment of living premises and preferred resting areas of dogs and cats is a must.

S-methoprene Insect Growth Regulator will interrupt the life cycle of hidden part of the population, preventing them from reaching maturity and will significantly reduce the possibility of re-infestation.



BIOPREN® 5 EC

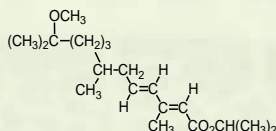


BIOPREN® 5 EC is an oil based emulsifiable concentrate containing insect growth regulator S-methoprene. Suitable to control a variety of insect species like fleas, bed bugs and stored product pests. To be used alone or in tank mix combination with fast acting insecticides. When used alone, also suitable to control mosquitoes and flies.

ADVANTAGES:

- Eliminate less visible part of population
- Relative immediate and prolonged efficacy.
- It targets the eggs and larvae of insects and stops their development.
- Not toxic to vertebrates and environment friendly.
- Adequate for pre-hatch application of insects.
- Suitable to control a variety of insects species

ACTIVE INGREDIENT:



w/w 6.11 % (50.00 g/l) S-methoprene

Acts as an insect juvenile hormone analogue that inhibits insect maturation processes. The mature stages lose their capacity to reproduce, thus the cycle of reproduction stops and infestations diminish.

PHYSICAL PROPERTIES:

APPEARANCE: pale gold liquid
ODOUR: slightly petroleum odour
SOLUBILITY: emulsifies in water
FLASH POINT: 61.0 °C

STABILITY:

If stored in original closed packaging in a dry and cool place protected from radiant heat and direct at max. 35 °C, it can be used for 2 years from manufacture.

Use insecticides safely. Always read the label and product information before use.

**PRODUCT FOR
PROFESSIONAL USE**

**EXPIRATION PERIOD:
2 years**

PACKING:

KS-22240



12 x 500 ml



44 cartons



BIOPREN® 5 EC



Directions for use: Prior to preparing the working solution, shake the concentrate well and reclose the bottle once the required quantity is measured.

Fill the sprayer with water to half of its volume, measure the quantity of Biopren 5 EC concentrate given below and pour into the sprayer. After that, fill the sprayer to the desired volume, then mix the working solution thoroughly. Keep the prepared working solution closed and use it up within 48 hours. Shake the working solution from time to time during treatment or every time following longer standing.

It is unlikely that Biopren® 5 EC concentrate will damage the treated surfaces, however - in order to prevent it - it is recommended to make a trial application on an inconspicuous area. It is particularly important when treating carpets and upholstery. When used on highly porous surfaces (such as brick, plaster, cement, etc.), efficacy may reduce.

For bed bug control: mix 60 ml of Biopren® 5 EC concentrate with 5 l of water.

As far as possible, apply the spray directly to the insects' harbourages activity areas. Pay special attention to treat the spots listed below:

- immediate surroundings of the bed (area behind headrest, abutments of bed and wall, bedside table, near-bed furniture)
- other furniture and textile fabrics in the room (tables, cabinets and their drawers, seats and lying furniture – with special care to coverings, fringes, seams –, items fixed to the wall, items hanging on the wall, curtains, cornices, strip curtain, etc.),
- cracks and crevices on the floor, in the walls and on the ceiling (parquet, linoleum, wall to wall carpet, joint and edges of suspended ceiling, edges of wall-paper).

Spray around sockets, switches and smoke detectors. Attention! Do not directly spray on or into electric equipment and devices.

Remember that even the smallest crevice may be a suitable harbourage for the insects.

Do not apply the product directly to the bed and bed-linen (sheet, pillow, blanket, duvet). It is advisable to wash bed-linen in water of at least 60 °C (if permitted in the directions for use of the textiles) at the same time as treatment is performed.

As Biopren® 5 EC does not affect adult bed bugs, it is recommended to use it together with a residual spray (as a tank-mix) to achieve effective control.

On the average, 5 litres of working solution is enough to treat 100 m² surface.

To improve efficacy, repeat treatment within 2-3 weeks. In case of heavy infestation or under poor hygiene conditions a third treatment may also become necessary. Repeating the treatment is especially important at such problematic places where it is impossible to determine the initial level of infestation, which are overcrowded or where the tenants often change thus increasing the risk of re-introduction of bed bugs. Observing the above directions for use and carefully performed treatment may provide several months of control over the given area.



BIOPREN® 5 EC



For flea control: mix 5 ml of Biopren® 5 EC concentrate with 5 l of water.

Apply the spray to the places where flea larvae develop and where imagoes are seen.

In case of habitations treat mainly the floor, carpets and wall-to-wall carpets, under-furniture areas, the wall up to a height of 1 m (with special regard to cracks and crevices), preferred resting places of dogs and cats kept in the flat, as well as upholstered furniture. Apply thorough ventilation after treatment.

In case of premises used for animal keeping, dog kennels, piggeries treat the floor and side walls up to a height of about 1 m. Pay special attention to cracks and crevices. Do not spray the animals directly. Make sure that pets or livestock can re-enter the treated area or lairs only when the spray is fully dried.

Do not wash off the treated surfaces for at least 1 week after treatment. When the spray is washed off, treatment should be repeated.

On the average, 5 litres of working solution is enough to treat 100 m² surface.

Residual efficacy: Observing the above directions for use and applied at the recommended dose several months of control. 6-9 months residual effect may be achieved.



For the control of stored product moths:

Perform treatment in empty warehouse space. Close the doors and windows and turn off air conditioner and ventilators before starting control. In order to obtain proper result, prepare the premises with due care.

Apply the prepared working solution as a cold fog directly to the presumed whereabouts of moth larvae (wall cracks and crevices, joints of shelves, etc.) with an equipment capable of generating cold fog (cold fog generator, sprayer fitted with nozzle of proper vaporization). When preparing the working solution, observe the instructions in the user's manual of the equipment.

Quantity of the concentrate to be used: 20 ml/100 air m³. Proceed with the treatment of the premise going from the inside outwards.

Keep the doors and window closed for at least 30 minutes after fogging, then ventilate the premise.

It is recommended to repeat treatment depending on the level of infestation.

